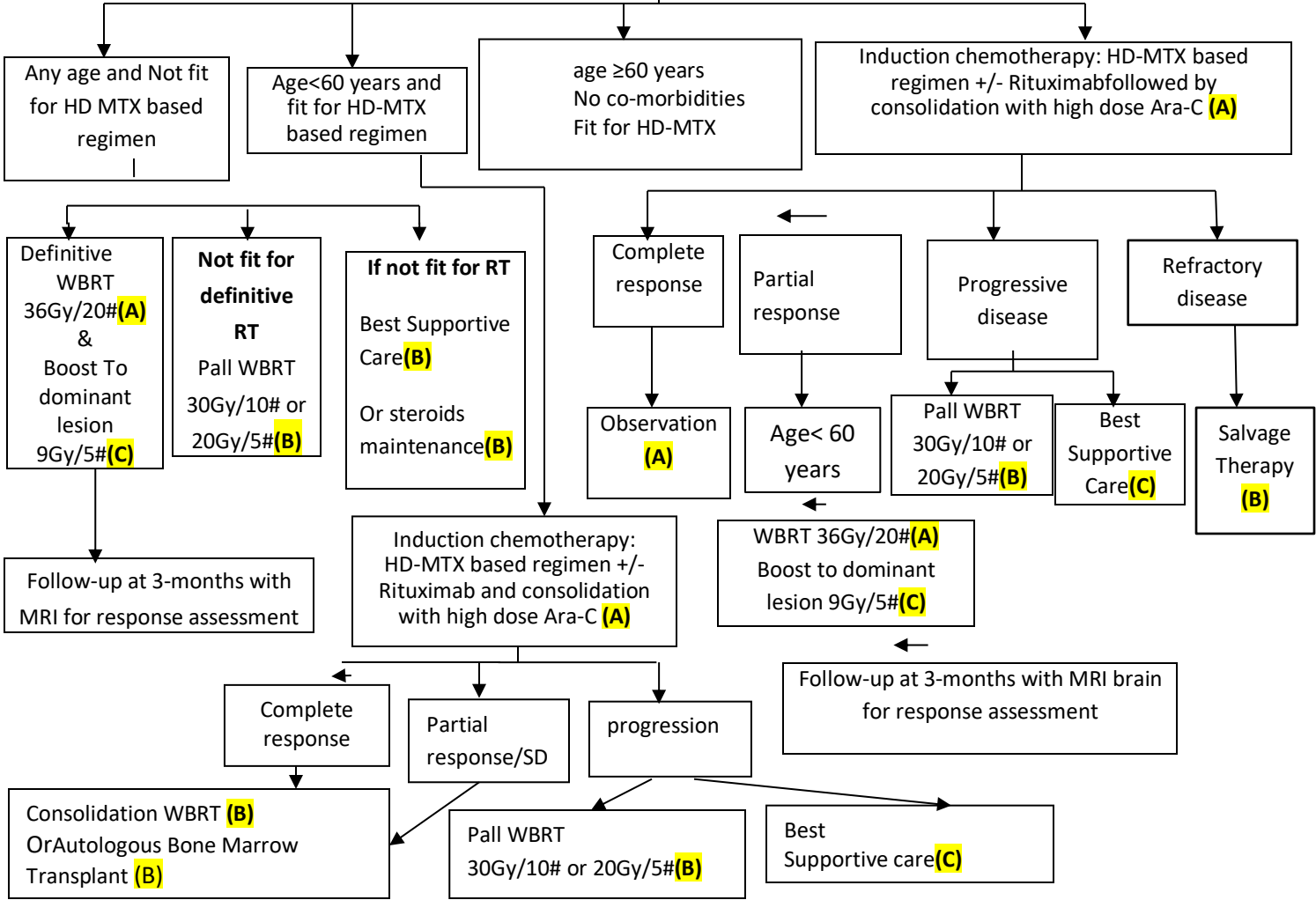


Primary CNS Lymphoma (PCNSL)

Imaging
 MRI brain and sagittal spine screen with contrast (A)
 and whole body FDG-PET/CT for systemic staging (B)

- CSF cytology and flow cytometry, bone marrow biopsy, testicular USG, slit lamp examination (A)
- Stereotactic brain biopsy recommended for establishing histologic diagnosis (A)
- Avoid use of steroids as far as possible prior to imaging and brain biopsy (B)

Age, Co-Morbidities, Performance Status



A= MANDATORY
B= OPTIMAL
C= OPTIONAL

*Response assessment should be done with MRI using T1+Contrast, T2W, T2FLAIR, Perfusion and Diffusion sequences

