

# Cancer Research and Relief Trust

Cancer Research and Relief Trust is a charitable organization dedicated to providing comprehensive cancer care including screening and rehabilitation. Dr C S Mani had initiated the esophageal speech rehabilitation program in 2008, with the help of esophageal speech therapists from the Asian Federation of Laryngectomees Association, Japan. We have successfully conducted 9 such workshops since then, with more than 300 attendees each workshop. CRRT in collaboration with AFLA has successfully trained and certified esophageal speech therapists.

Even though laryngectomees can be rehabilitated for speech by surgically fitting speech prosthesis and external electronic speech device, both these methods involve an initial and recurring cost and not universally successful. The esophageal speech does not have any initial or recurrent cost but must be taught in the right way.

**Registration Fees:** Free (lunch and tea included)

## Contact Us:

Dr Lakshminarayana 9789938273  
Dr Shafika 7550013983  
Dr Shruthi 9677397223  
Mr. Sharfruddin 9445170464  
Secretary 9791086092,8680047464  
Website: [www.crirt.org.in](http://www.crirt.org.in)

# 10th Esophageal Speech Therapy Workshop



**Date:**

3<sup>rd</sup> to 7<sup>th</sup> December 2018

**Time:**

9 am to 5 pm

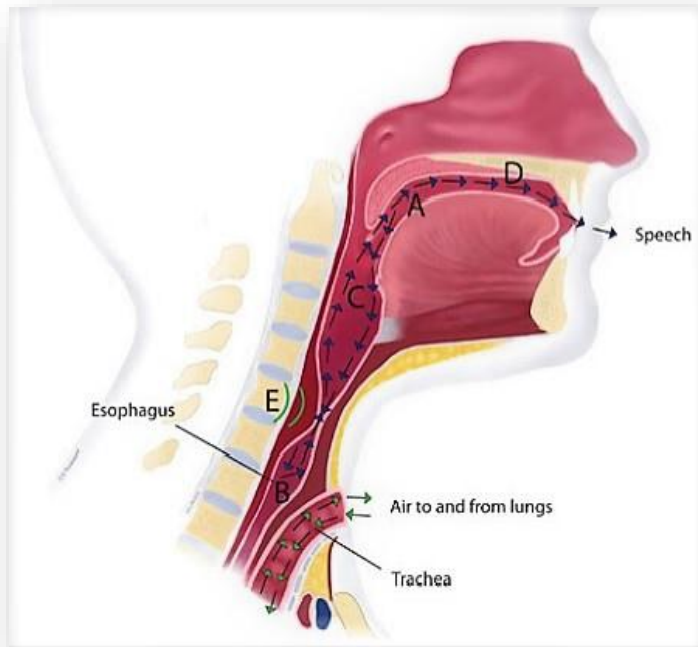
**Venue:**

Asha Nivas Social Centre  
9 Rutland Gate  
5<sup>th</sup> Street, Chennai  
Tamil Nadu,  
600006



# Esophageal Speech Workshop

# Highlight of the Workshop



The workshop aims to empower the laryngectomee patient to develop skills to communicate using esophageal speech. This novel workshop has laryngectomees teaching the laryngectomees. This model has a positive impact on the laryngectomees and instilled motivation to learn and practice esophageal speech.



- 5-day intensive workshop
- Special sessions on various techniques of esophageal speech
- Instructors:
  - Laryngectomees teaching Esophageal Speech
  - Experts from the Asian Federation of laryngectomees Association

*Workshop will be conducted in regional language*

## Target Audience:

All patients who have underwent total laryngectomy, and who are not using Tracheo-esophageal prosthesis.

