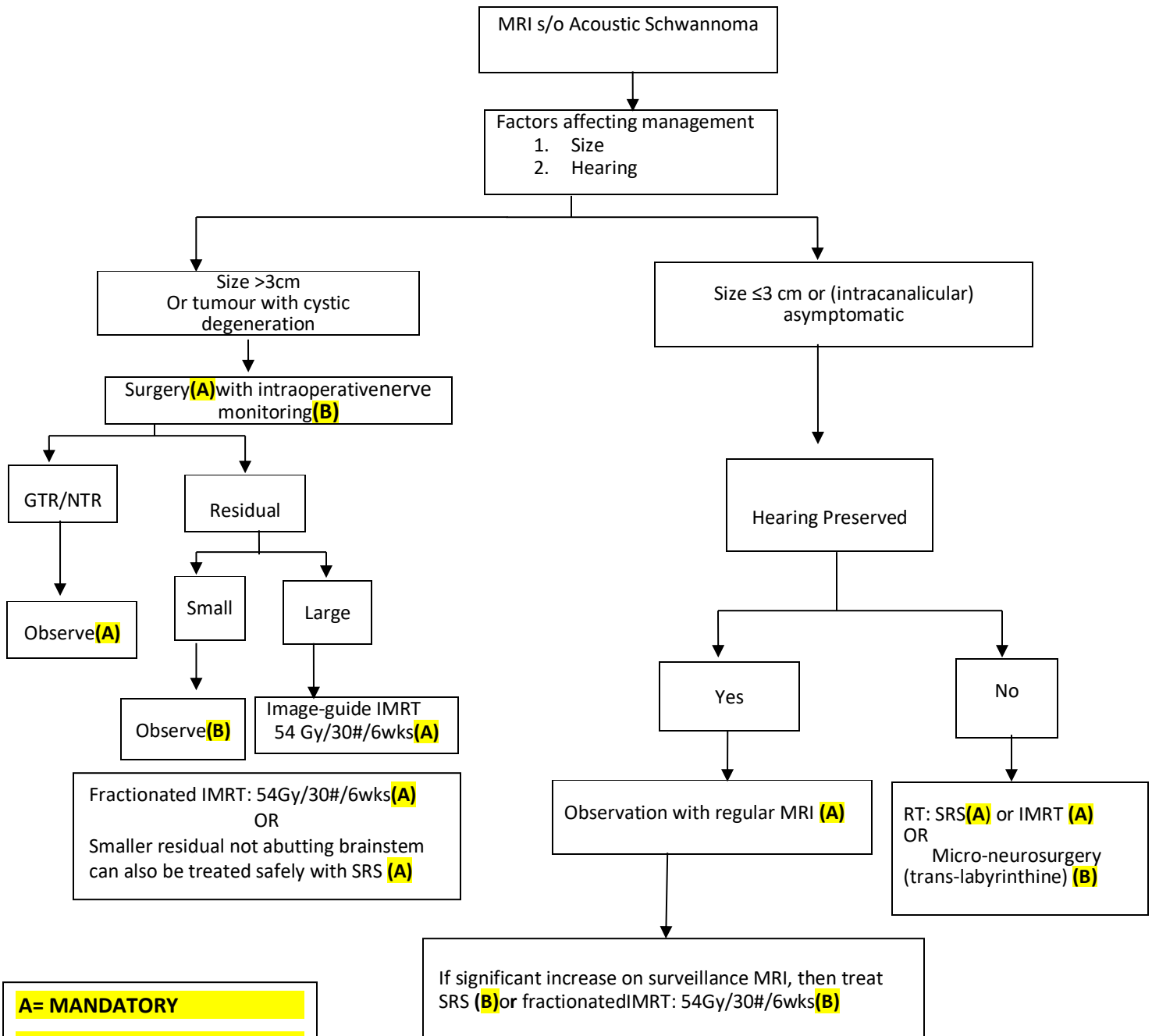


**Algorithm 9: Sporadic Acoustic Schwannoma (Non-NF-2)**



**A= MANDATORY**  
**B= OPTIMAL**  
**C= OPTIONAL**

**For SRS USE KOO'S GRADING SYSTEM OF TUMOUR DESCRIPTION**

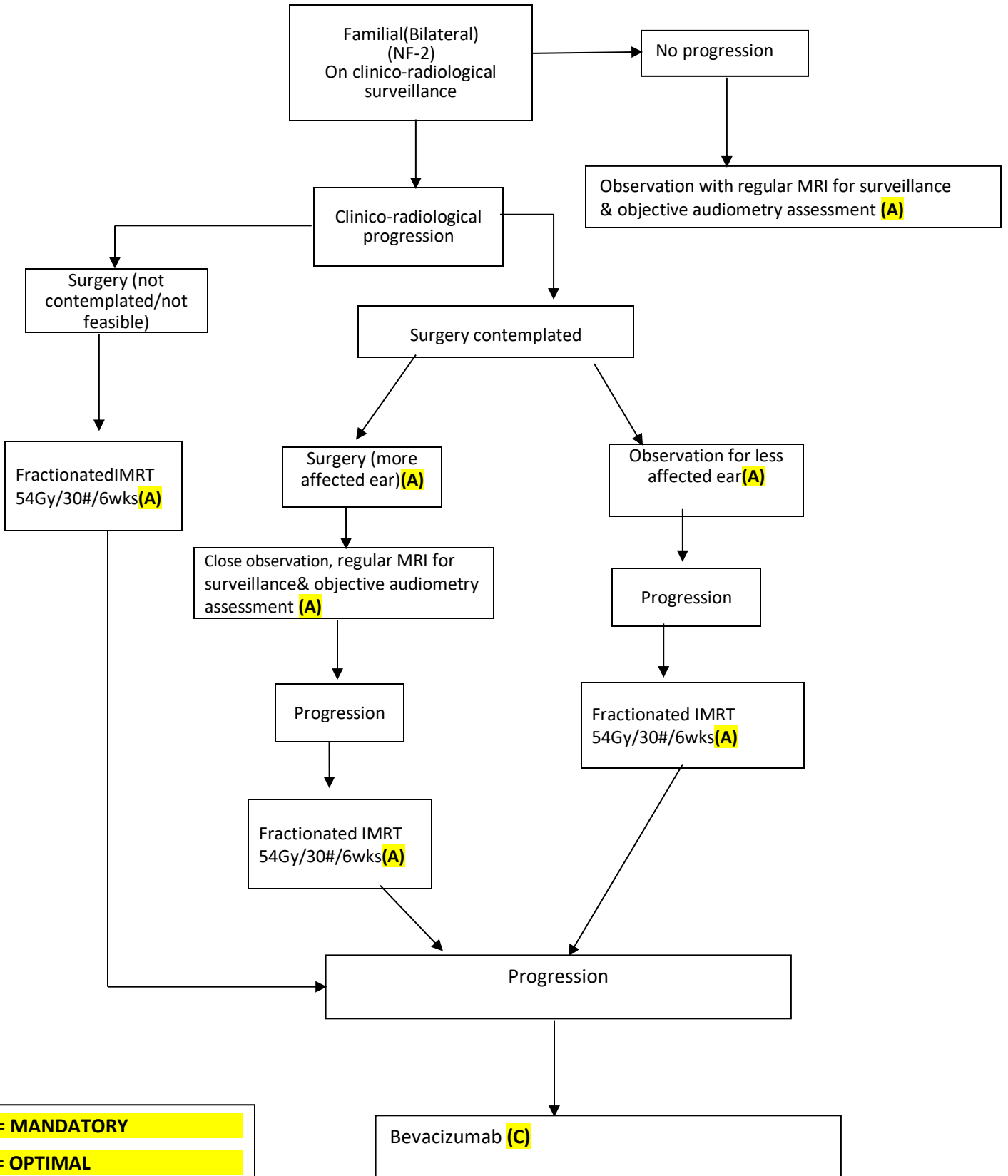
G1: SMALL INTRACANALICULAR TUMOUR

G2: TUMOUR PROTRUDES INTO CP ANGLE, NO CONTACT WITH BRAIN STEM

G3: SMALL TUMOUR INVOLVING INTO CP CISTERN, NO BRAIN STEM DISPLACEMENT

G4: LARGE TUMOUR WITH BRAIN STEM AND CRANIAL NERVE DISPLACEMENT

**Management Algorithm for NF-2 associated Bilateral Acoustic Schwannoma**



**A= MANDATORY**  
**B= OPTIMAL**  
**C= OPTIONAL**

