

Fig 1: Non-infiltrative Low Grade Glioma (LGG)/Glioneuronal Tumours

(Juvenile Pilocytic Astrocytoma / Dysembryoblastic Neuro Ectodermal Tumours / Ganglioglioma / Subependymal Giant cell Astrocytoma/ Neurocytoma)

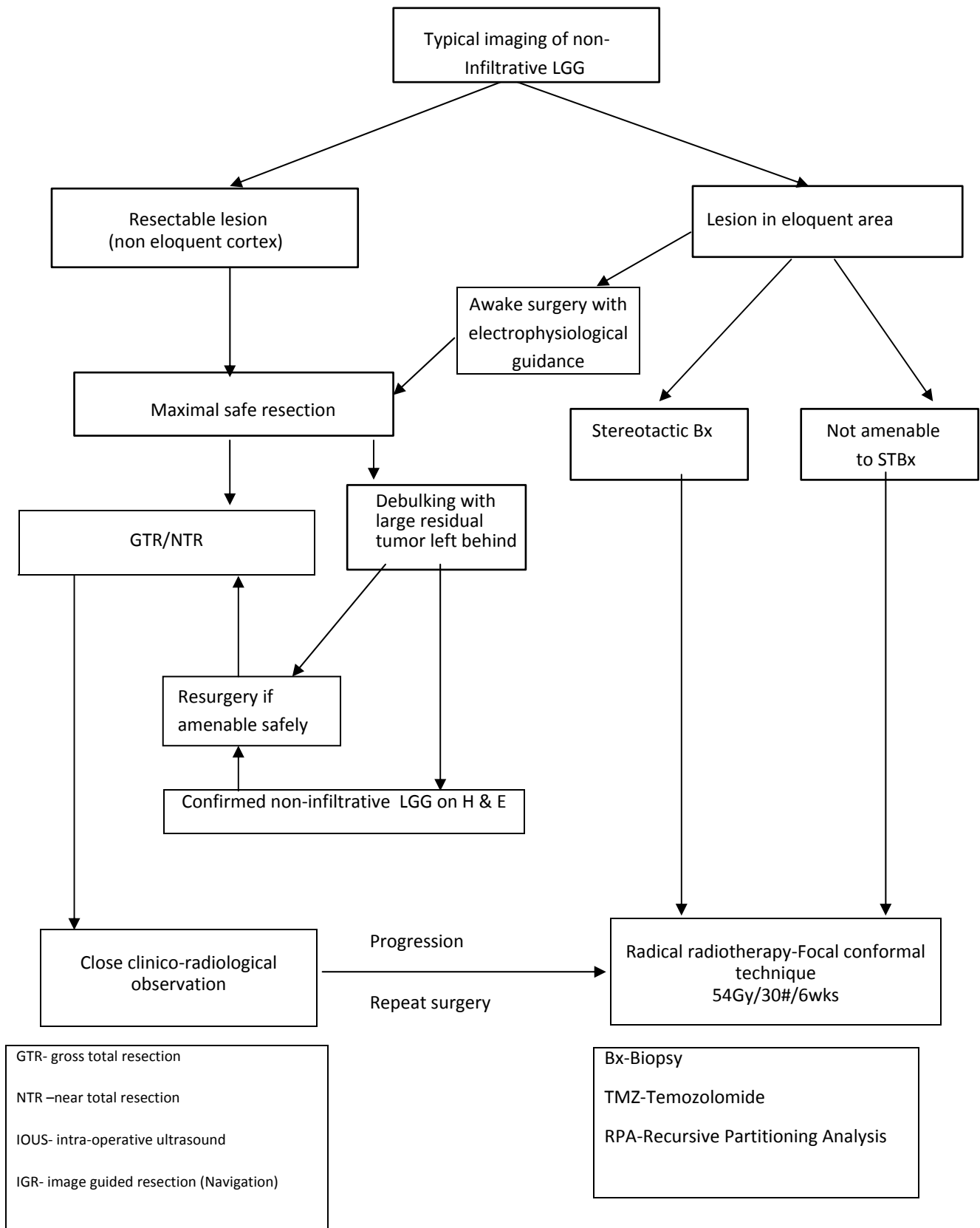


Fig 2: Infiltrating Low grade gliomas including Oligodendrogliomas (ODG)

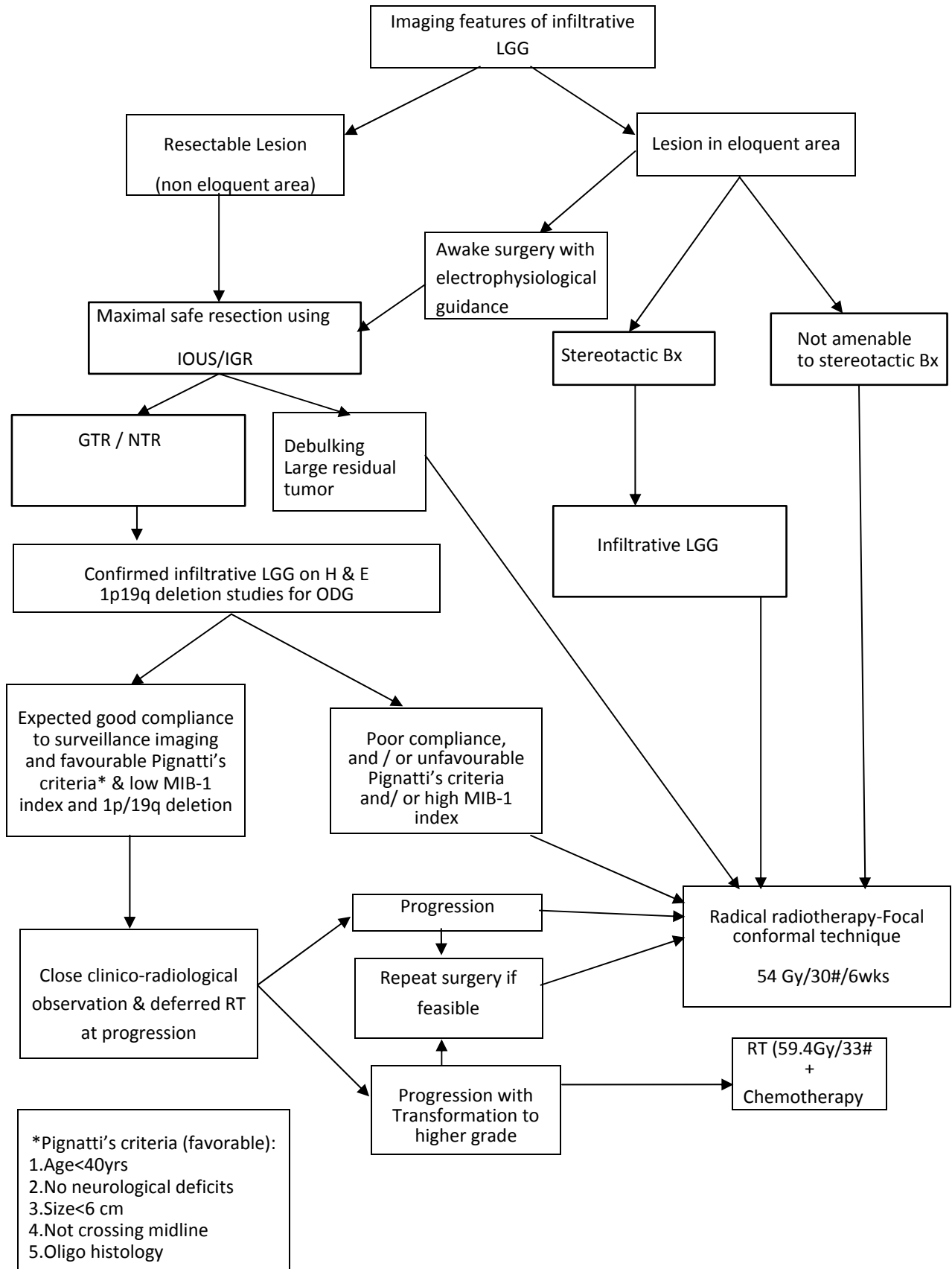


Fig 4: Glioblastoma (GBM)

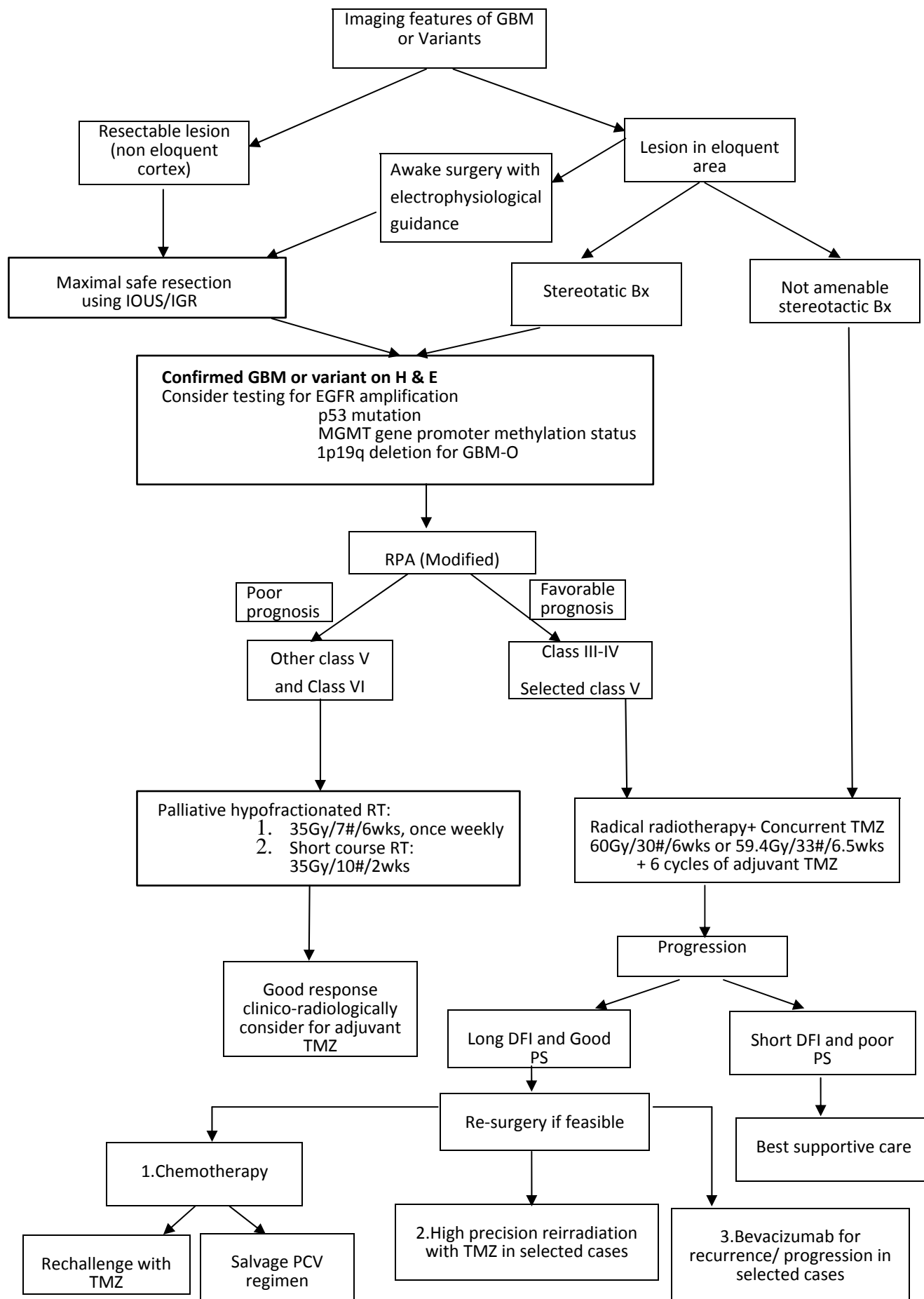


Fig 5: Ependymoma

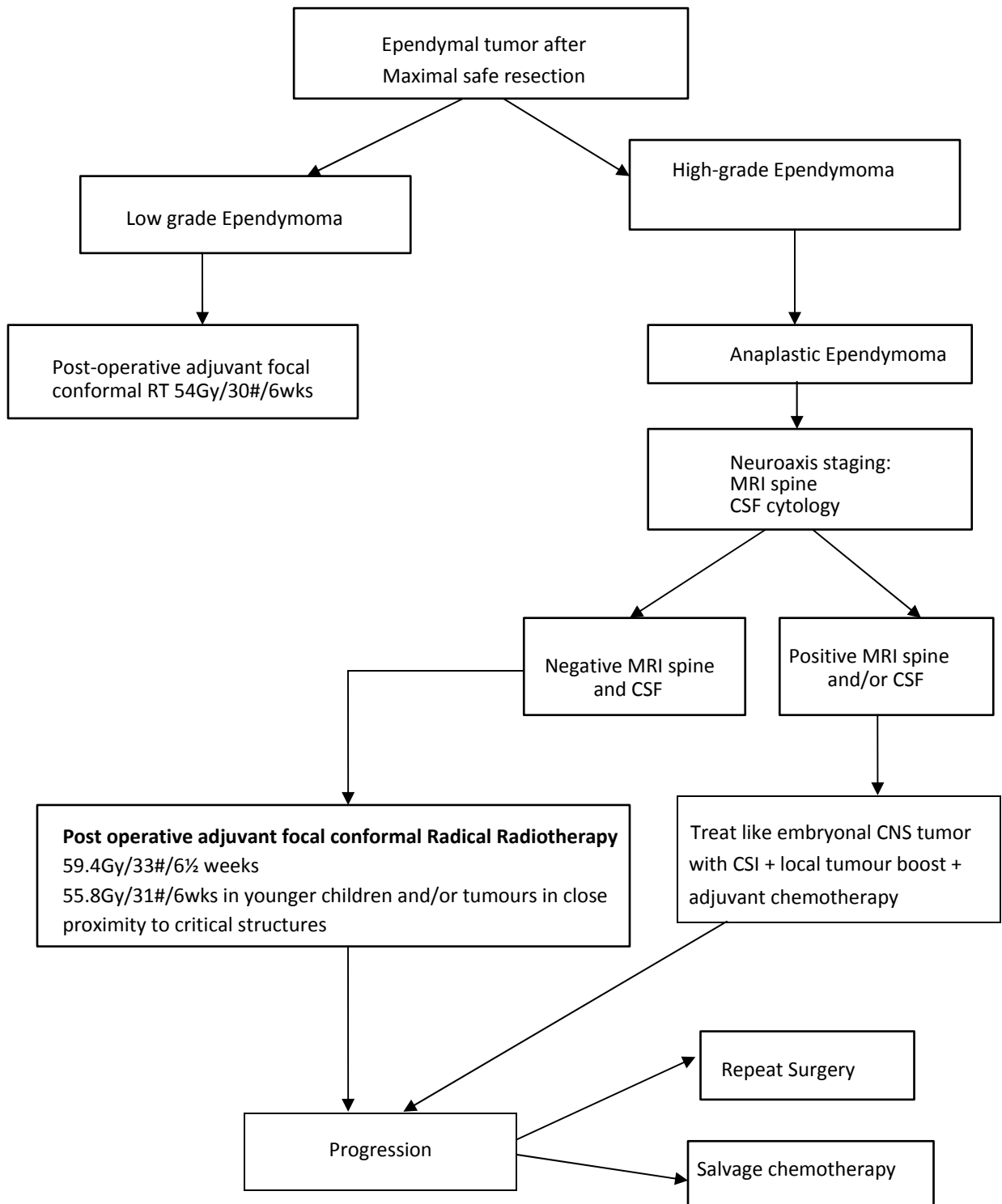


Fig 6: (DIPG / focal exophytic / cervicomedullary / tectal plate gliomas)

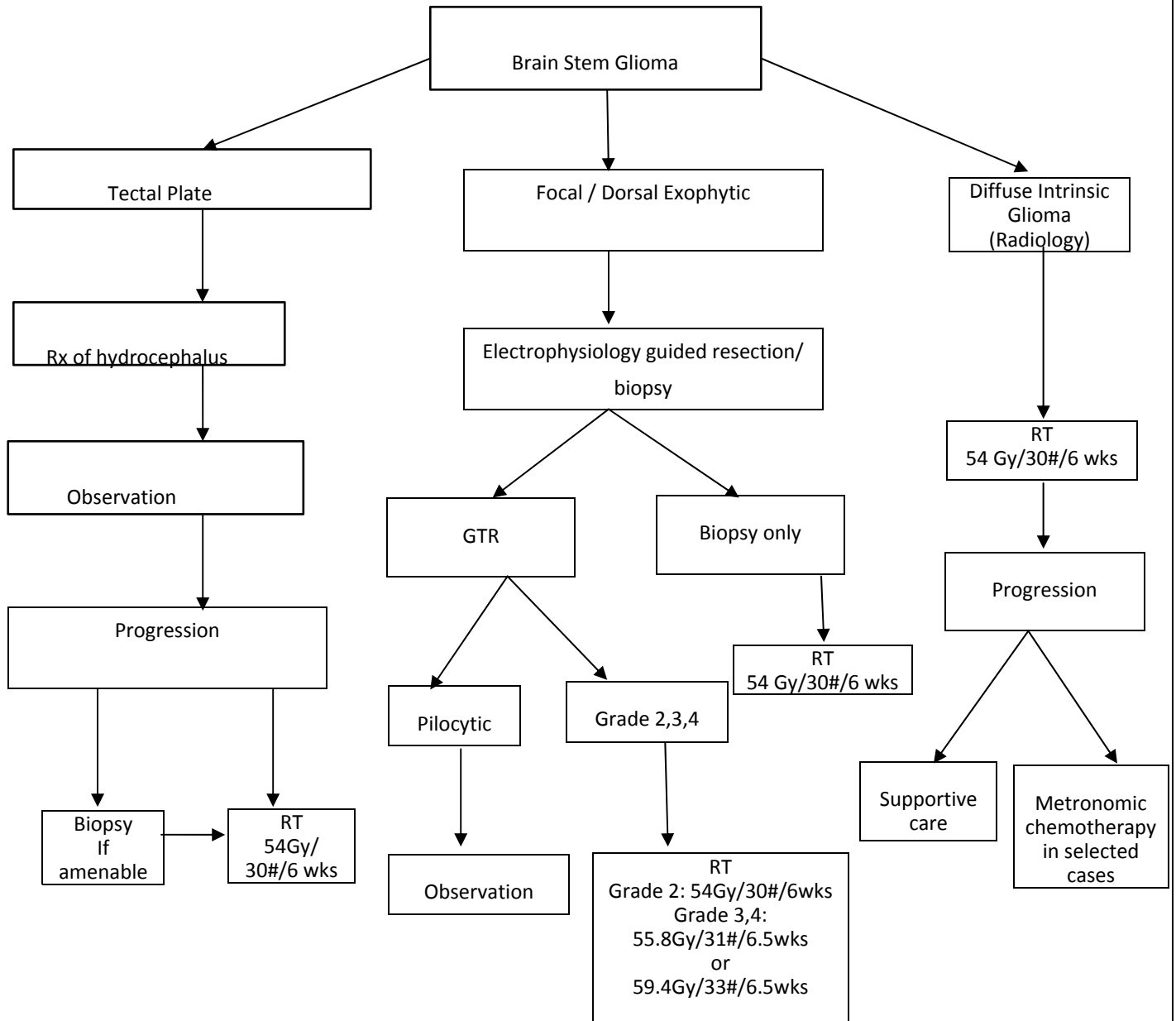


Fig 7: Primitive / Embryonal CNS tumours

(Medulloblastoma / PNET / ATRT / Ependymoblastoma / Pineoblastoma)

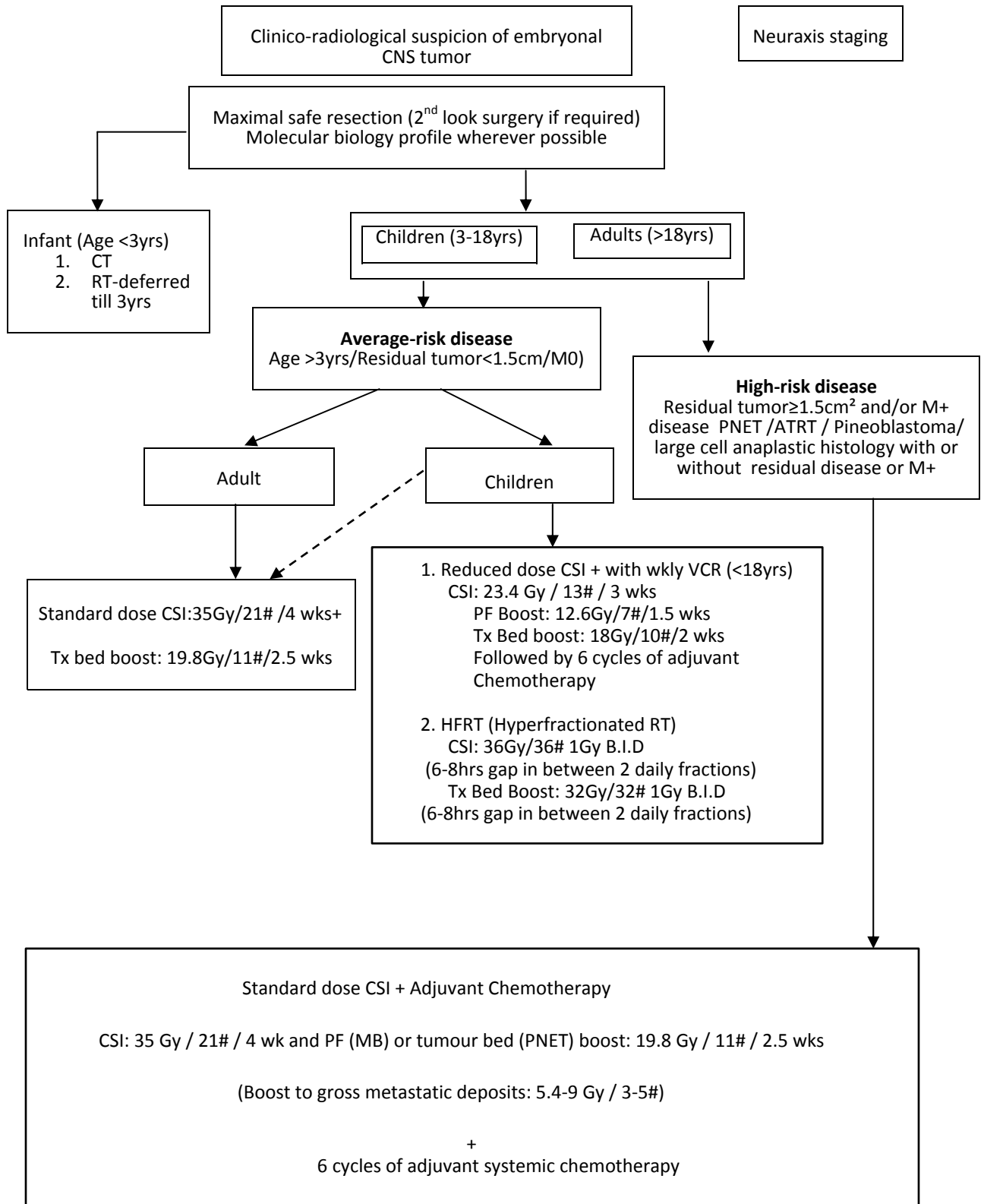


Fig 8: Craniopharyngioma

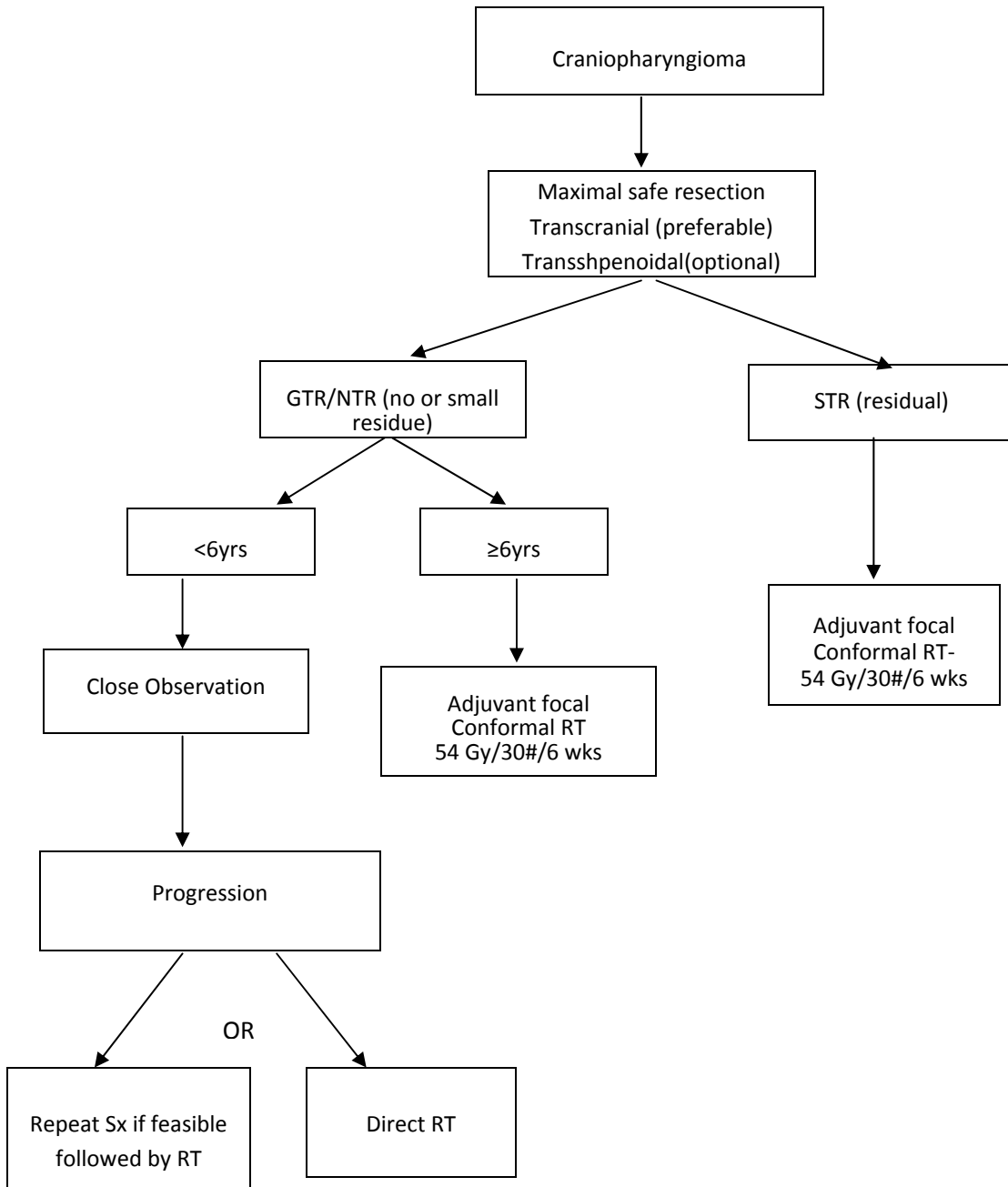


Fig 9: Pituitary Adenoma

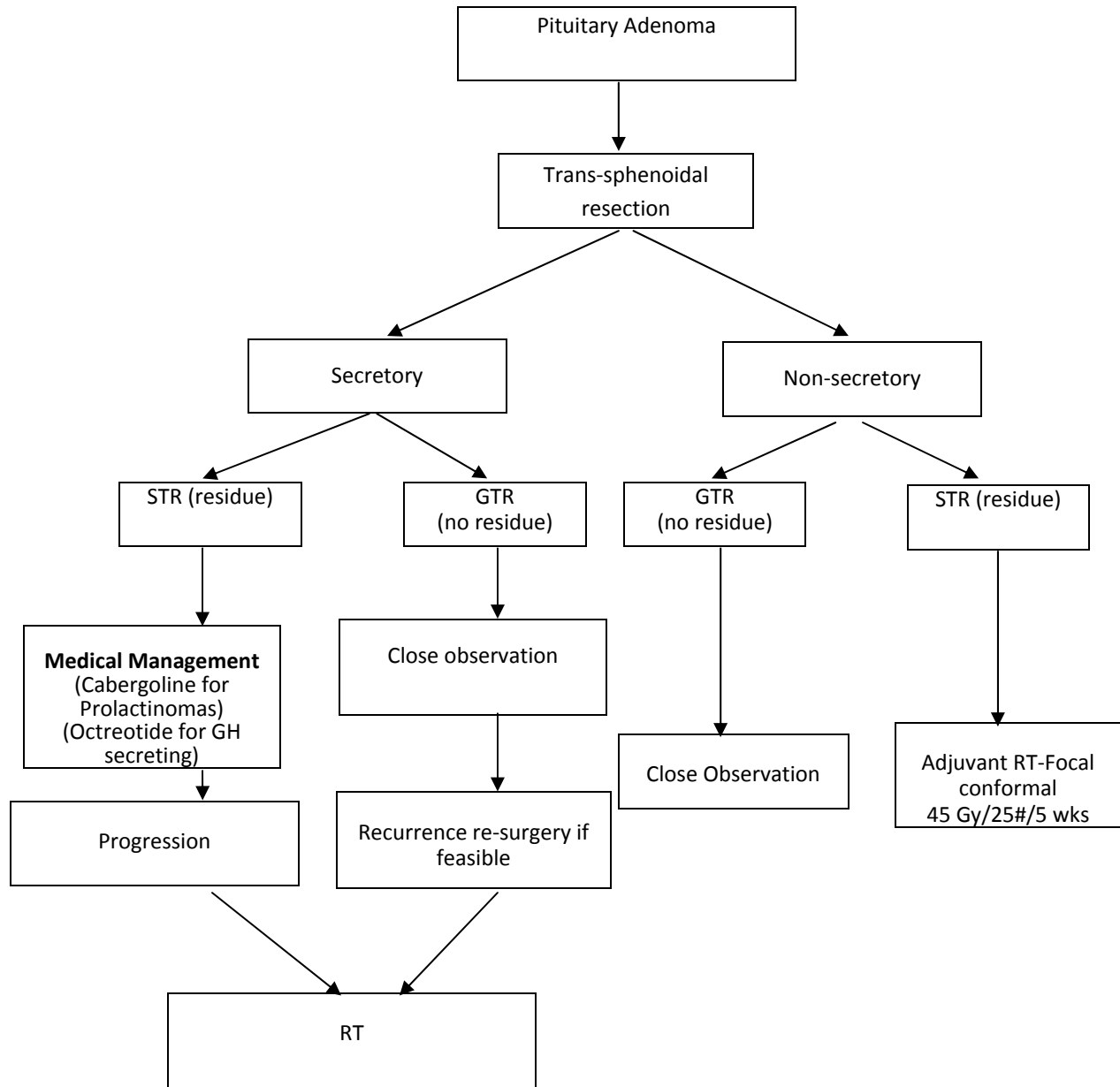
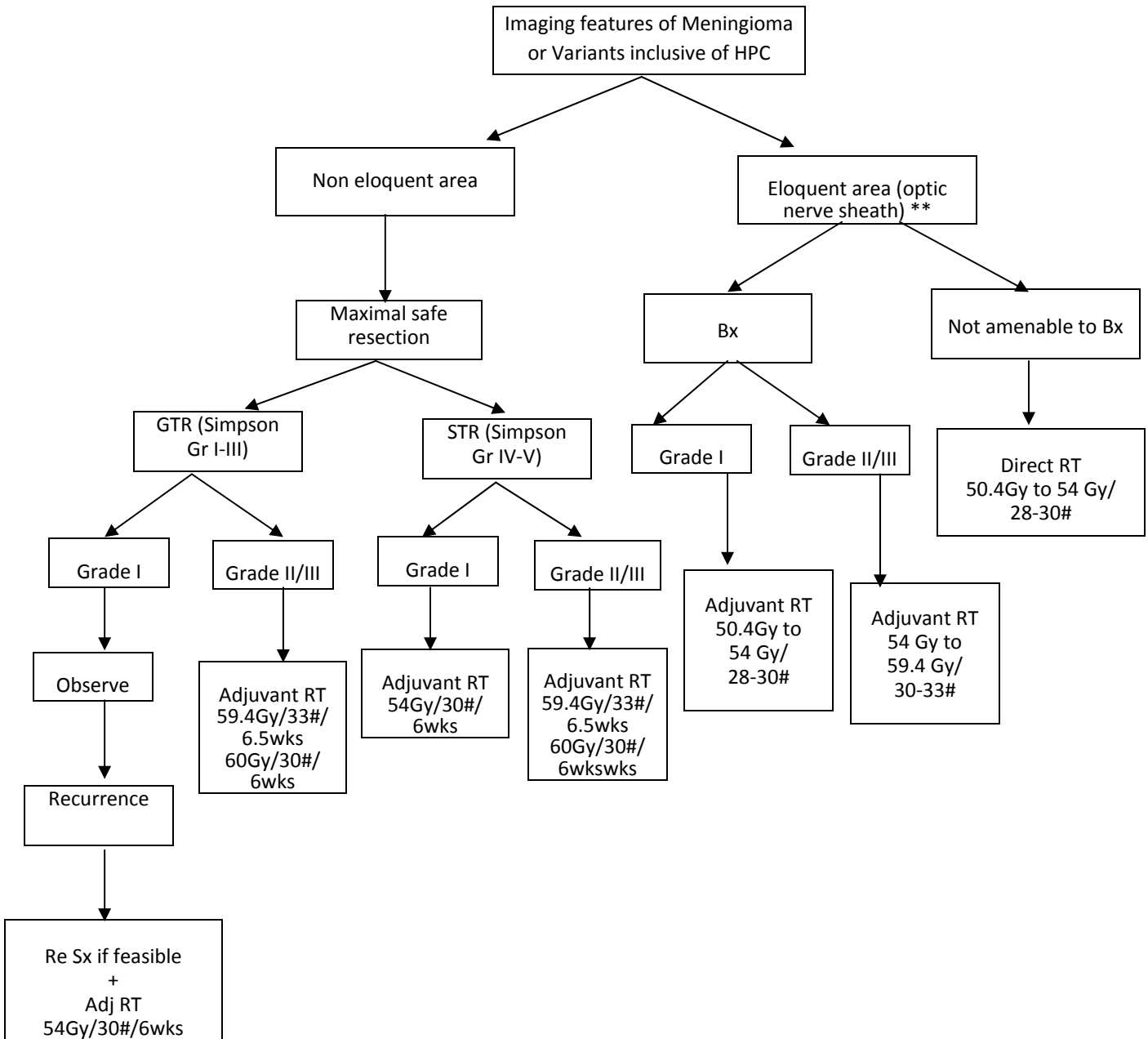
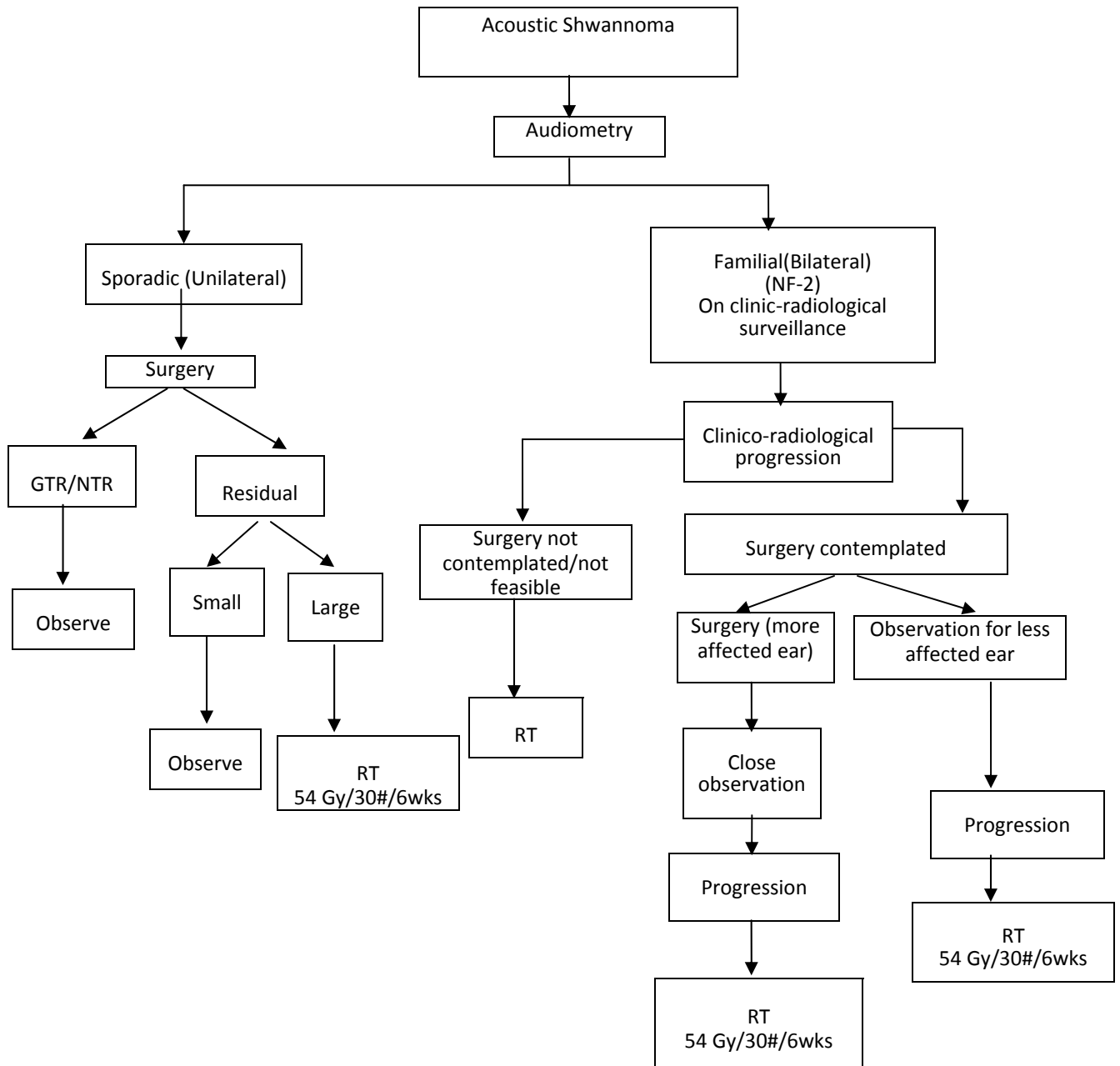


Fig 10: Imaging features of Meningioma or Variants including Hemangiopericytoma (HPC)



RT= focal conformal radiotherapy
 **Image guided IMRT is preferred

Fig 11: Acoustic Shwannoma



IMRT is preferred over conformal RT

